

## DRC - System Description

The integrated **ManuSoft DRC** system delivers the benefits of over twenty years experience and active client input.

We are able to address individual customers needs, through our extensive understanding of the manufacturing environment, recognising that every client requires a specific configuration.

Our aim is to provide cost-effective, efficient, reliable and user friendly business management software to accommodate the needs of small to mid-sized manufacturers in a ever changing market, including:

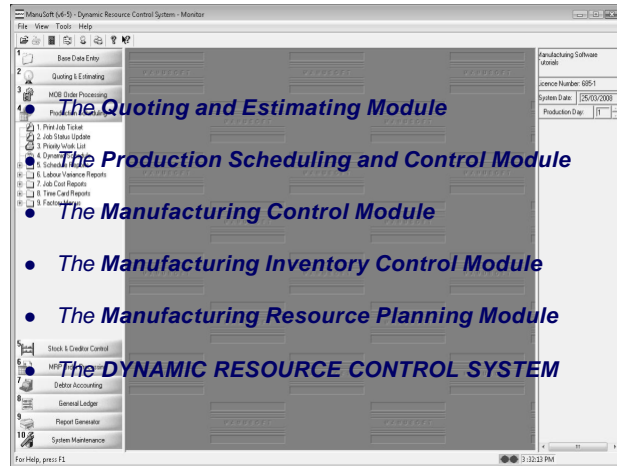
- Job shop, prototype and custom manufacturing
- Mixed mode production with make to-stock demand
- Make to order with make from inventory assembly
- Batch and volume manufacturing
- Process and service provisions
- Multi level BOM manufacturing
- Sales demand and stock demand production

The **ManuSoft DRC** software system includes a range of features and a collection of built-in tools to support your decision making

- Data management
- Quoting and estimating
- Part configuration management
- Resource and work order planning
- Alternative BOM and routing
- Advanced capacity and schedule control
- Real time shop data collection
- Demand driven purchasing and manufacturing
- Job costing, tracking and analysis in real time
- Resource efficiency analysis
- Variable process routing
- Customer order management
- Debtor, creditor and general ledger control
- Barcode data collection
- Serial lot tracking
- Company specific calculators
- Image and document attachment facility
- Contact relationship management
- Divisional operation and B2B interface

The system is based on five fully integrated modules that make up the complete **ManuSoft DRC** package.

The additional Financial Control Module provides a complete Business solution.



The operation of the **ManuSoft DRC** system is based on the creation of a PART number database, containing a Bill-of-Materials and process routing information for each manufactured item.

*The PART number database is the foundation for the estimating/quoting, production scheduling and the material and labour analysis routines*

The **ManuSoft DRC** system has complete sub-assembly and variable process routing capabilities, suitable for the development of complex part numbers and structures.

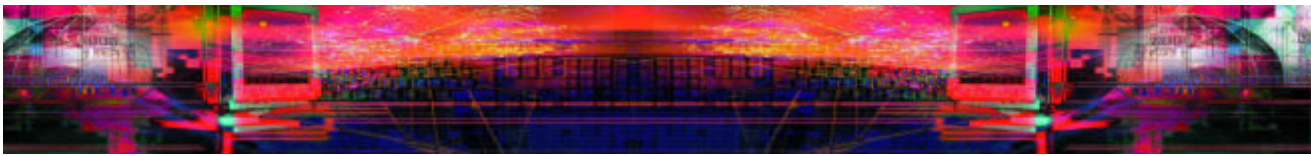
### QUOTING AND ESTIMATING SYSTEM [Q E S]

The QES package creates a PART file in which material and processing details are stored, and maintains a QUOTE file containing price and quote status information.

A Bill-of-Materials [BOM] may be developed for each PART.

The BOM may contain up to 676 items and has an unlimited sub-assembly nesting capability.

OUR FULLY INTEGRATED FRONT-TO-END MANUFACTURING SOLUTION ELIMINATES  
THE COSTLY INEFFICIENCIES OF FRAGMENTED SYSTEMS



The process routing may contain up to 45 process stages, selected in any order or combination from a list of 480 defined work centers.

Other files created include a STOCK file, to retain raw material cost data and a CUSTOMER file containing the client details.

Provides for:

- *Quoting and Estimating*
- *Quote Status inquiry and up-date*
- *Selective listing of Quote file detail*
- *Quote confirmation and Advice generation*
- *Selective Quote file analysis by customer and product*



The QES system provides a quoting and estimating facility which follows standard cost accounting principles and is the starting point for other production control func-

The PSC module provides a stand-alone production control tool, which can operate along side of an independent accounting or stock control systems.  
At this level the system requires little operational overhead  
The PSC module works only in conjunction with the QES system

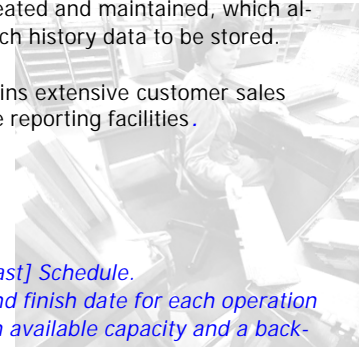
### MANUFACTURING CONTROL SYSTEM [MCS]

A Job HISTORY file is created and maintained, which allows process and despatch history data to be stored.

This module also maintains extensive customer sales analysis and job variance reporting facilities.

Provides for:

- *A Critical Path [forecast] Schedule.*
- *Determines a start and finish date for each operation of each job, based on available capacity and a backward schedule from the job due date.*
- *Sales analysis by customer by period with sales vs cost analysis by item*
- *Labour Variance reporting, which allows for "feedback" to the QES system for improved quoting accuracy*
- *Selective CUSTOMER and HISTORY file analysis*
- *Despatch Advice and delivery document generation*



### PRODUCTION SCHEDULING AND CONTROL [PSC]

The PCS module establishes a Manufacturing Order Book [MOB file], which details the quantity of a particular part required for a customer on a specified due date.

This detail, together with the PART file data from the QES module provides the essential information for production scheduling.

The Manufacturing Order Book is maintained by providing facilities for order entry, including complete parts explosion and product despatch.

Provides for:

- *Job Ticket generation [process routing] and Customer Order Advice*
- *Order Status enquiry and Order Book Analysis*
- *Work through-put, Orders-on-hand and Work-in-progress reporting.*
- *Equipment Loading, Material and Labour Requirement reporting*
- *Production scheduling facility with work centre priority list reporting and Job status up-date capabilities*

The MCS package allows for actual production feedback data to be recorded on a job history file.  
An Analysis comparing actual to estimated process times may be carried out, which generates a work centre efficiency report.  
Efficiency factors may be fed into the quoting formula to provide more accurate cost estimates.  
The MCS package requires the QES and PSC modules for full functionality.

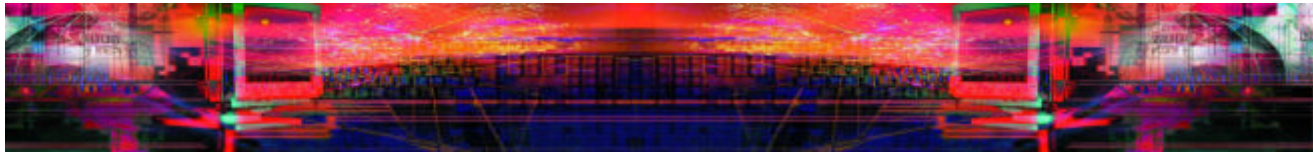
### MATERIAL INVENTORY CONTROL [MIC]

The MIC module has been developed to simultaneously meet MRP1 objectives together with dynamic inventory control to:



CREATE YOUR OWN MANAGEMENT CUSTOM REPORTS USING THE REPORT GENERATOR FACILITY





- Ensure materials and products are available for production and delivery to customers.
- Maintain the lowest possible level of inventory.
- Plan manufacturing activities, delivery schedules and purchasing activities.

The MIC module is a finished goods, raw material stock and inventory control system. The system maintains a SUPPLIER file, a STOCK file and a PURCHASE order file.

A default supplier can be nominated against any individual item to increase the purchasing efficiency. Additional suppliers may be added at any stage. Each item can have up to 4 selling price categories. Min/Max Stock levels and minimum order quantities may be defined for each inventory item. Various costing options are provided through the system [purchasing cost, standard cost, average cost...]

*Provides for:*

- *Selective listing of STOCK, SUPPLIER and PURCHASE order file*
- *Order demand analysis*
- *Manual and automatic purchase order creation*
- *Purchase order confirmation security with controlled Advice generation*
- *Vendor history reporting based on YTD, MTD and previous year.*
- *Delinquent order listing*
- *Stock on hand / on order reporting. Stock committed reporting available when merged with the MCS module*
- *Stock item processing, receiving, transfer and goods return function*
- *Itemised stock usage reporting based on YTD, MTD and previous year by supplier/customer and product group*
- *Picking slip generation for delivery documentation*

The MIC package provides a complete finished goods and raw material inventory control system.

The MIC package provides full functionality as a stand alone system.

Purchasing and Invoicing facilities are available when integrated with the MCS module.

This includes order status reporting and dynamic order update

Supplier payment function and creditor reporting.

Stock despatch facility with invoice advice creation

Customer payment receipt function with debtor reporting

## MANUFACTURING RESOURCE PLANNING [MRP]

The MRP system allows for the input of sales forecasts and orders from sales and marketing.

A detailed production schedule that accounts for machine and labor capacity, scheduling the production runs according to the arrival of materials is generated.

Data about the cost of production, including machine time, labor time and materials used, as well as final production numbers, is provided from the MRP system to the Accounting and Finance Module or exported into other Finance systems. *[when integrated into the full ManuSoft DRC system]*

The MRP module allows a Customer order file to be created from which either supplier orders [purchases] are generated, or a manufacturing order book [MOB] established. Work orders may be raised, this occurs automatically when the supplier is the manufacturer.

Various options are available to control the extent to which the two systems are merged.

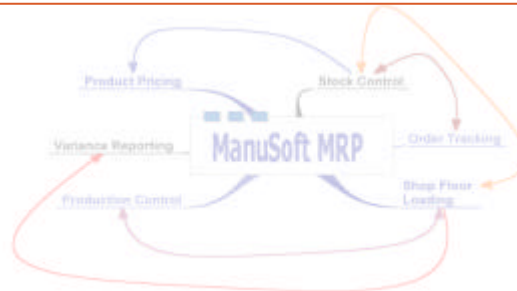
*Provides for:*

- *The establishment of a CUSTOMER ORDER FILE [COF] from which orders are generated*
- *Customer order advice creation*
- *Customer order despatch facility*
- *Customer order status reporting including orders-on-hand*
- *Material / Inventory exception reporting and monitoring*

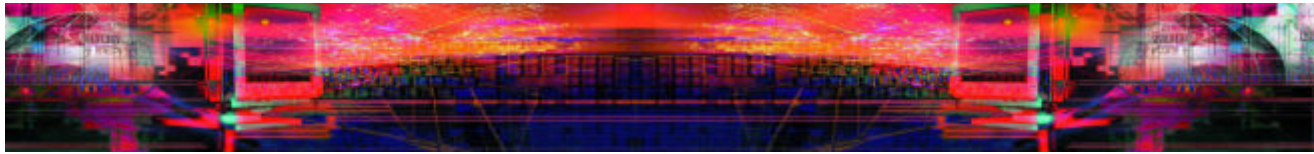
This package provides the link into the development of a powerful MRPII system.

All levels within the manufacturing organisation, associated with production, purchasing, inventory control and accounting functions are likely to be involved in the administration of the ManuSoft system.

The MCS and MIC modules are required to form the foundation of the MRP system



ISO-9000 COMPLIANCE MADE EASIER THROUGH MATERIAL AUDIT TRAIL, SHELF LIVE CONTROL, DRAWING REVISION CONTROL FUNCTION AND REJECT ANALYSIS REPORTING



## FINANCIAL CONTROL MODULE [FCM]

The FCM provides financial functionality through the General Ledger facility.

The user defined chart of accounts forms the basis of all accounting transactions.

The FCM provides integrated Invoice and Purchase order transaction processing through the Debtor and Creditor Journal function.

Recurring transaction recording is available through the automated standing journal facility.

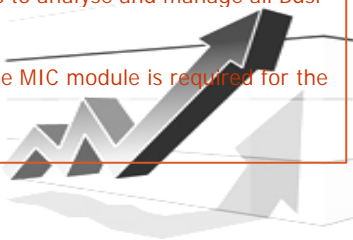
Full system security is provided via additional password protection and the ledger posting function to prevent data modification.

Provides for:

- Integrated financial management through Debtor, Creditor, General and Standing Journals
- Automatic transaction processing on due date
- Bank deposit slip generation
- Remittance advice printing, Cheque printing and/or electronic banking facility
- Customer discount and Settlement discount facility
- Trading Statement, Profit/Loss and Balance Sheet with actual vs budget reporting
- Bank reconciliation and Account history reporting
- Trial Balance reporting
- Full Audit trail recording
- Tax reporting function

The Financial Control Module is the final link to the **ManuSoft Dynamic Resource Control System** which, when used in conjunction with other ManuSoft options provides a full set of tools to analyse and manage all Business activities.

The Debtor option and the MIC module is required for the MC system



## GENERAL SYSTEM FACILITIES

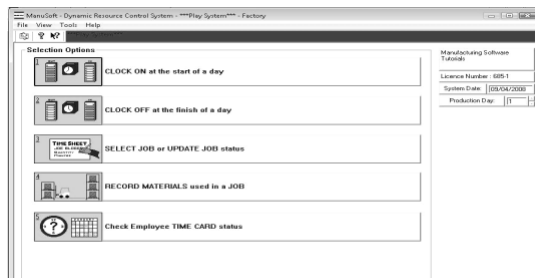
All ManuSoft modules contain a Report Generator capability whereby user-defined reports may be generated and stored.

The Report Generator has fully integrated cross-link capabilities, together with "Wild-card" and "insearch" selective cross reference facilities.

Enhanced report creation capabilities have been provided through the built in *Crystal Report* writer using ODBC. Complex and high visual impact reports for management purposes may be generated

## OTHER SOFTWARE OPTIONS

- Process Table:** allows for the automatic recall of standard process time data during part creation.
- Debtor accounting:** provides an invoicing and debtor control function with payment and credit facilities, Statement and Age trial balance document generation. The direct accounting link option allows for direct data transfer to an external accounting system.
- Job costing:** This provides for the storage and recall of actual material and labour costs and rejects, associated with the manufacture of specific jobs. Job cost, labour, reject analysis reports and an employee time sheet are provided.
- CRM:** provides a company wide contact resource management tool with built in document attachment facility
- Touch Screen:** This turns the "Job Shop" schedule into a dynamic scheduling facility via the ManuSoft Touch Terminal, which is quick, effective and easy to use.



HEAD OFFICE: AUS / NZ / PACIFIC  
 MANUFACTURING SOFTWARE  
 57 OAK ROAD  
 KIRRAWEE NSW 2232  
 AUSTRALIA  
 PHONE +61 2 95423066  
 MANUSOFT.COM.AU



UK / CENTRAL EUROPE  
 MANUSOFT SUPPORT (UK) LTD  
 SUITE 144  
 99 WARWICK STREET  
 LEAMINGTON SPA  
 WARWICKSHIRE CV324RB



PHONE: +44 (0) 19266 14140  
 MANUSOFT.ORG